

CANADIAN
PSYCHOLOGICAL
ASSOCIATION



SOCIÉTÉ
CANADIENNE
DE PSYCHOLOGIE

CPA Accreditation Panel Conversation Session

**75th Annual CPA Convention
Vancouver, BC
June 5, 2014**



As of June 2014, CPA accredits 68 programs total:

- **33 doctoral** programs
 - 25 clinical, 5 counselling, 1 neuro, 2 school/clinical
- **35 internship** programs
 - 29 clinical (2 inactive), 3 counselling, 3 neuro, 0 school



Panel Activities in 2013-14:

- Congratulations to 3 new accredited internship programs
 - Corrections Canada, Ontario Region
 - Annapolis Valley Health, Nova Scotia
 - ROCK Reach Out Center for Kids, Ontario
- 12 programs re-accredited at Fall and Spring meetings
- 12 re-accreditations currently in progress
- Plus 2 new internship programs under review



Activities Continued:

- CPA 2013 Need, Supply, & Demand Summit
- ASPPB Spring 2014 meeting
- APPIC 2014 Bi-annual conference
- AAAC Board Member-at-Large

Activities Continued:

- Recruiting for new Panel members
 - One for Fall 2014 meeting – ideally bilingual
 - Two or three for Spring 2015 and Fall 2015
- Contact accreditation@cpa.ca for more info



Activities Continued:

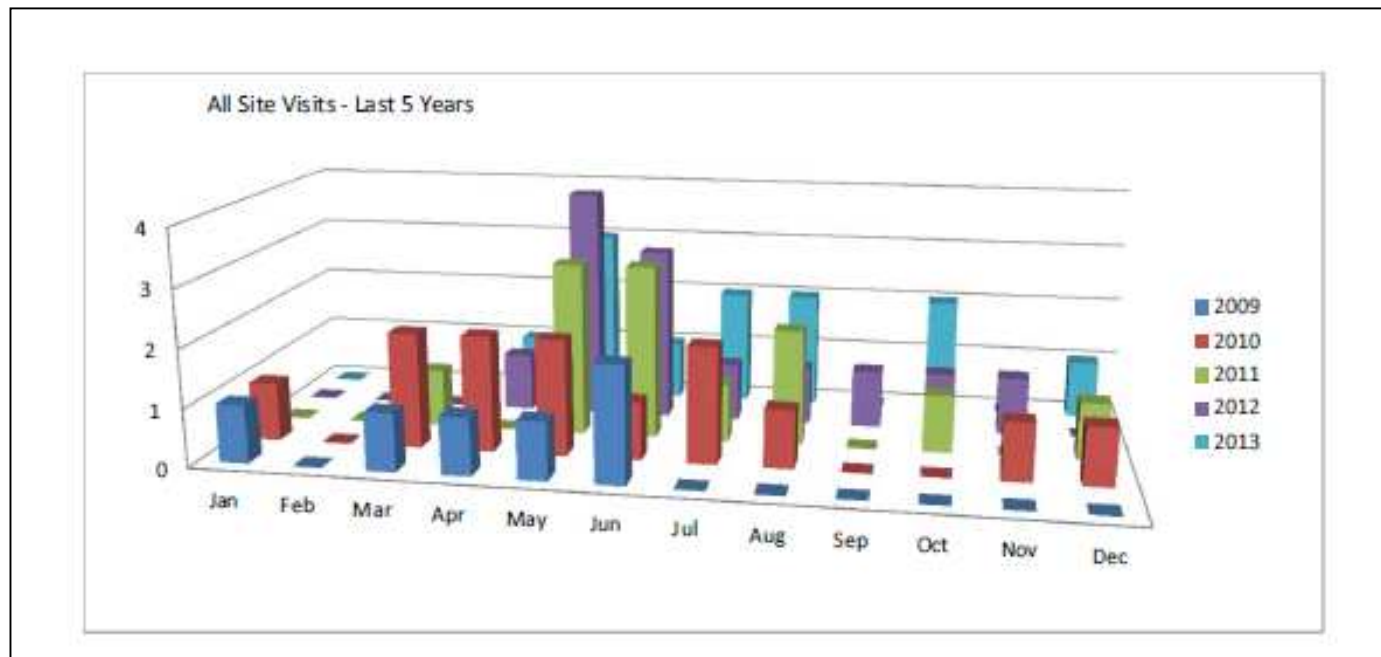
- Site visitor workshops
 - Gatineau, QC
 - Toronto, On
 - Calgary, AB
 - Vancouver, BC
- Planning for online component of training
 - 4 Volunteers (2 doc, 2 int) to take AAAC Online training course – no fee, about 1 ½ hours total time; contact Accreditation Office if interested and/or see info at: <http://aaac.ca/English/Training.html>

Activities Continued:

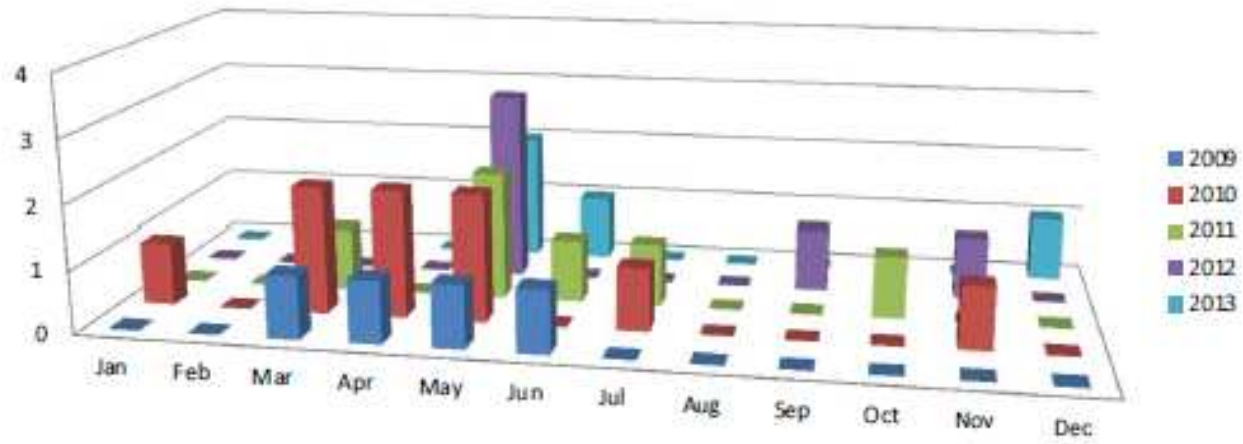
- Updating of SS, AR, and public disclosure forms
 - By end of June all new forms will be available on our website: <http://www.cpa.ca/accreditation/resources/>
 - Please particularly note:
 - New public disclosure form
 - New info requested by CIHI
 - **Statistical info required from every program every year – this will allow us to enhance the info available to students, and to various stakeholders**

Activities Continued:

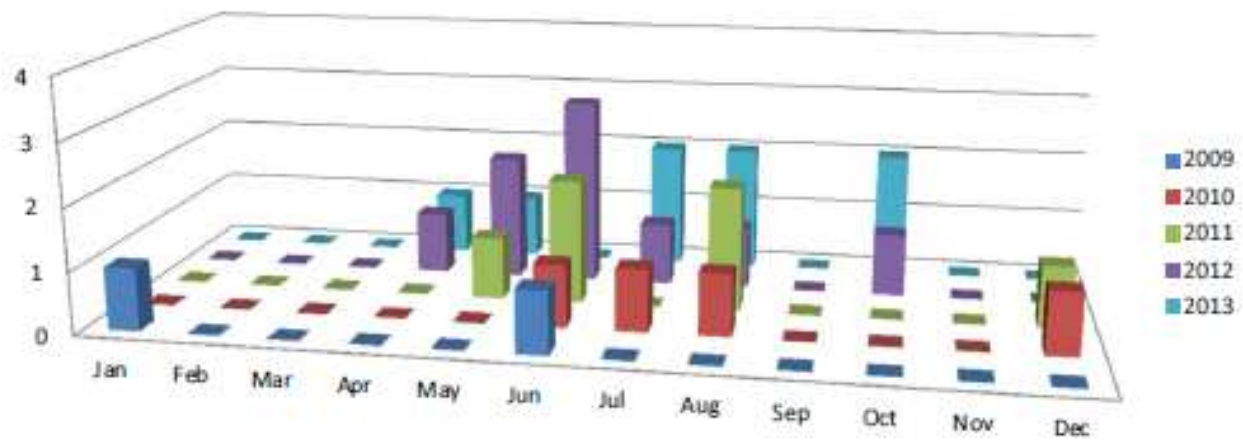
- Self-Study Submissions – a look first at SV dates:



Doctoral Site Visits



Internship Site Visits



And More Activities:

- Efforts to prepare for the future: Trial of self-study submission deadlines – 3 time periods

Submission During	For Site Visit During
May-June	Sept-Oct-Nov
Nov-Dec	March-April-May
Jan-Feb	June-July-Aug

- For programs due in 2014-15 – please try to adhere to one of these submission periods
- For programs due in 2015-16 – ‘random’ assignment to review cycle (advance notice to be provided in Fall 2014)



Convention Reminders:

- **Program Evaluation & QI Session**
 - Friday June 6 – *see slides available on website*
- **Accreditation Celebration**
 - Friday June 6 – *see write-up in newsletter vol 1, issue 1*
- **Site Visitor Workshop**
 - Saturday June 7

Discussion



Q1: Is there any flexibility on the requirements for the signature page? Signatures can be hard to obtain, especially for September 1st

- **One of the reasons the Panel requests that various institutional personnel sign off on an annual report/self-study is to help ensure that these individuals are aware of your program, and that you can have an ear for advocacy when needed**
- **Who is best to sign at upper levels of administration is largely about who has decision making power (i.e., hiring, funding) for your program – if this is someone other than the positions noted on the signature pages, that is fine**
- **Panel is willing to further discuss deadlines and required signatures at its next meeting – want to balance responsivity to programs and their timelines, with need to review info in a timely manner and to assist programs in being recognized**



Q2: How will the new self-study submission periods work?

- **Viewing this a trial period – trying to establish some mechanisms and routines now so that as the number of accredited programs grows, the Panel will be able to effectively accommodate the larger workload**
- **Hoping that by providing target submission dates, we can help to better structure the self-study process – both for programs (i.e., deadlines help to address human nature to procrastinate) and for the Panel (timeliness of reviews and better balance of workload)**
- **Importantly as well, by attempting to spread out submissions, we can start to spread out site visits – which will assist programs in more efficiently putting together a site visit team**



Q2: How will the new self-study submission periods work? – cont'd

- **Does this mean a doctoral program will have to have a site visit during the summer months?**
 - **No – as much as possible, doctoral programs will still be encouraged and supported in holding their site visit during the ‘active’ months of the academic year (i.e., September through April); normally a doctoral program will not be assigned to a summer site visit cycle**
- **Does this mean no site visits at the other times of the year?**
 - **No – certainly there will be flexibility in the process, these are just suggested timeframes to provide a reasonable starting point**



Q3: What are the requirements to act as a site visitor?

- **CPA membership**
- **Anyone affiliated with an accredited training program (or a program eligible for accreditation) is welcome to become a site visitor**
- **We will also consider individuals who have recently been involved in an accredited program (i.e., within the last 3 to 5 years), who have relevant knowledge and experience with professional psychology training issues**
- **Do not need to be ‘senior’ in your career – early career may not be best time, but mid-career is definitely appropriate – if you are, or have acted as, a DoT, you are definitely experienced enough to volunteer as a site visitor!**



Q4: Why should someone consider becoming a site visitor?

- **Given our small community and the large potential for conflicts of interest, the more individuals we can have on the site visitor roster, the better it will be for everyone**
- **The accreditation process will function best if we can work towards having site visitors available from every program**
- **Site visits certainly involve some work, however the value is immense – learning about training approaches in other programs, having a voice with administration, networking, etc.**
- **Can be seen as an investment in your own program**
- **“Take one, give one”**